

# To the Moon

## Member

I think designer is...



我覺得設計師是活蹦亂跳失控小怪獸。

陳昀 Chen, yun

👍 攝影、插畫、影像處理、合成特效、手繪動畫  
✉ cathy\_ro@hotmail.com



我覺得設計師是發光的小蘑菇。

楊銘宜 Yang, ming-yi

👍 插畫、動畫、攝影、影像處理  
✉ occur0324@gmail.com



我覺得設計師是不同次元的人才能擔當的。

林芷慧 Lin, zhi-hui

👍 插畫、向量電繪  
✉ zaq5577@yahoo.com.tw



我覺得設計師是能讓普通人產生魔法的人。

游漪婷 Yu, yu-ting

👍 插畫  
✉ mm22662266@gmail.com







影片長度：4分鐘  
類型：2D手繪動畫  
尺寸：1280x720  
日期：2014/04

Time: 4 min  
Type: 2D animation  
Size:1280\*720 pixel  
Date:2014/04



—To the Moon，  
一段差距懸殊的愛情，愛上月亮的少年，日日夜夜都思念著月之女神，  
他該如何向高掛夜空的月亮訴說他的愛意與心情？

“To the moon” is about love between two people—the moon and a youth that are very different. The young person thinks of the Luna days and nights. How can he express his love and feelings to Luna?

#### 故事腳本 Story

夜色微涼的森林裡，歐利拖著疲憊的身子往回家的小徑上走著。突然，一隻蝴蝶輕拂過他的臉頰，往小徑之外飛去，歐利心裡覺得奇怪，便跟著蝴蝶前進。

When night falls, Ori is dragging his tired feet along a lonely path in the cool night air on his way back home . Suddenly, a butterfly caresses his face and flies off the path. Ori thinks it is weird. He follows the butterfly.

穿過幾顆樹叢，前方樹枝的縫隙間浮現出微微的光芒，歐利探頭一看，映入眼簾的是一名白晰可人的金髮少女，倚坐在池塘邊的石頭上。蝴蝶一擺一擺的朝少女飛去，正好停在少女伸出的手指上，歐利屏氣看著前方的景像，被少女的美貌所迷住，不由自主地往前跨了一步。

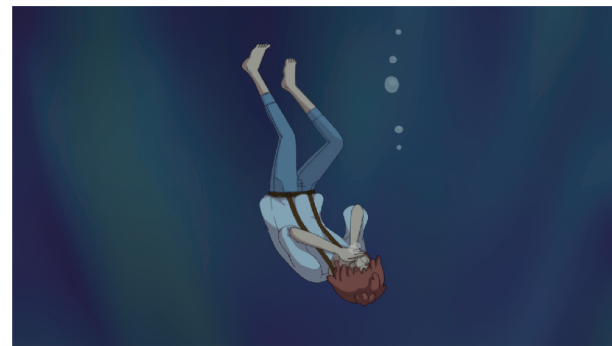
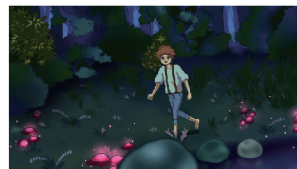
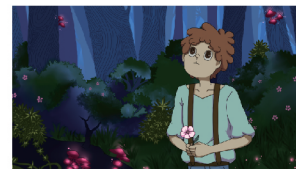
Walking past a few trees, he sees a dim light seeping through the branches. Ori peeps and sees a fair maiden with long blonde hair. She is sitting on a rock by the lake. The butterfly dances towards the maiden and stops on a finger of her hand that she is stretching out. Ori holds his breath and watches. Deeply attracted by the maiden, he makes an unconscious step.

樹枝被踩碎的啪嗒聲驚動了少女，她往歐利的方向一瞥，正好與歐利的視線相交，少女露出驚訝的表情，伴隨著些許羞赧。歐利伸出手想叫喚她，少女卻已化為一縷白光，滑進了湖中的月亮倒影，只剩點點的光芒漸漸往空中散去，飛向天上的月亮。

The branches’ cracking sound alerts the maiden. She turns her head to the direction of Ori. Her eyes meet his. Astounded, she blushes. Ori stretches his hand and tries to utter but she turns into a flash and disappears. She slips into the reflection of Luna in the lake and with a few flashes of light, flies towards the moon.

歐利看了看湖面的月亮倒影，抬頭望向天空中又大又圓的月亮，他知道，他已經被月亮女神給迷惑住心了.....

Ori looks at the reflection of Luna and raises his head to gaze at the big round moon in the sky. He knows that he is enchanted by Luna.





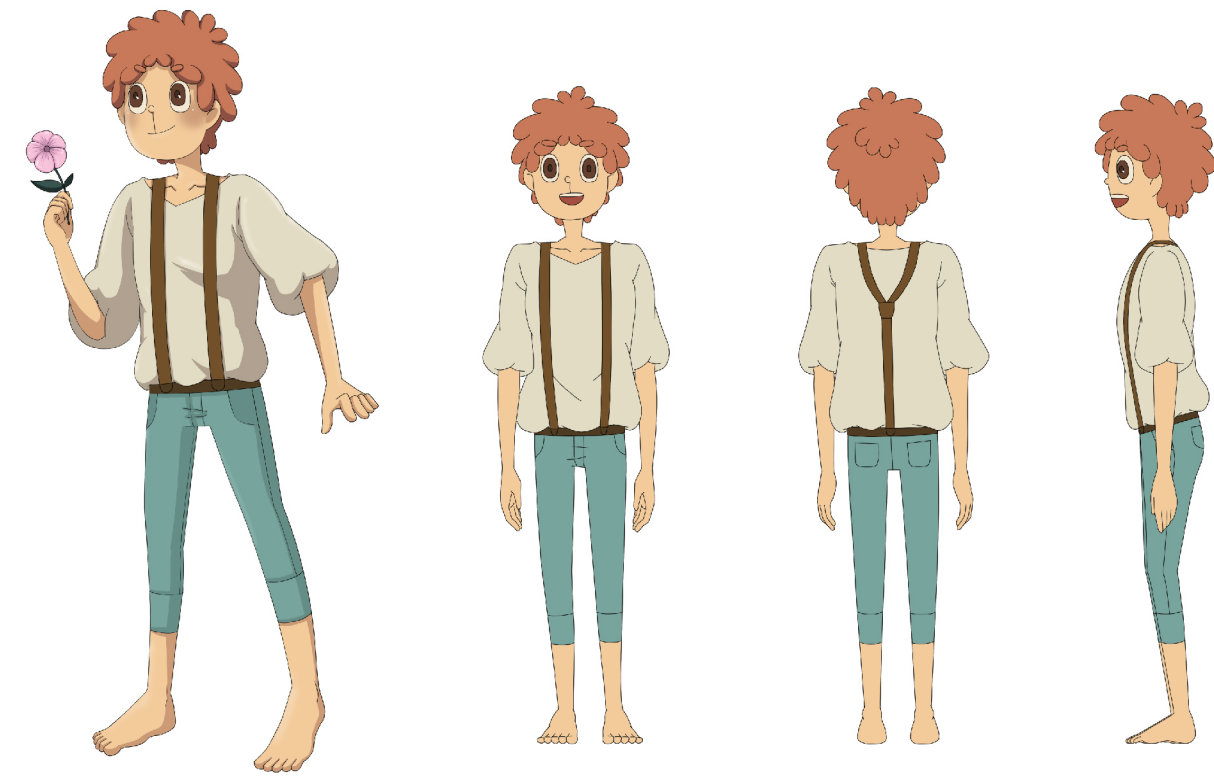
源起 Origin

以希臘神話 - 獵戶座的由來作為改編，故事中的主角歐利與阿特米絲，分別為希臘神話中，獵戶座及月亮與狩獵女神的化身。

在神話裡，獵戶座奧利恩原本是個擅長狩獵的美男子，他邂逅了美麗的狩獵女神阿特米絲同時也是太陽神阿波羅的妹妹 - 月亮女神，彼此一見鍾情，雙雙墜入情網。但阿波羅覺得奧利恩配不上高貴的妹妹，便想使計陷害奧利恩。

“To the Moon” is adapted from the story of Orion in Greek mythology. The major characters Ori and Artemis are the animated forms of Orion and the goddess of hunting respectively.

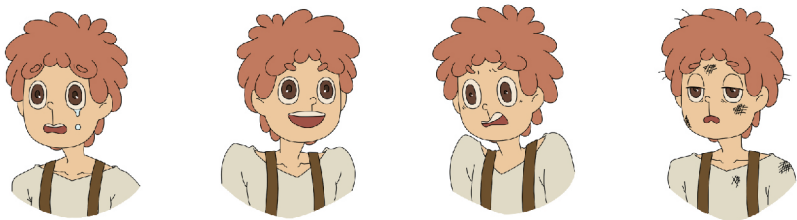
In the myth, Orion is originally a handsome young man that is good at hunting. He encounters Artemis, the goddess of the moon and sister of Apollo. They fall in love at the first sight. But Apollo does not think that they are a good match—the humble Orion does not fit his noble sister. So he sets Orion up.



歐利 Ori

長年獨自一人住在森林裡的歐利，靠打獵維生，有著一頭雜亂頭髮與鬆垮垮的上衣。個性單純認真，對於愛用盡了真心。在一次湖邊與阿特米絲偶然的相遇，改變了他的生活。

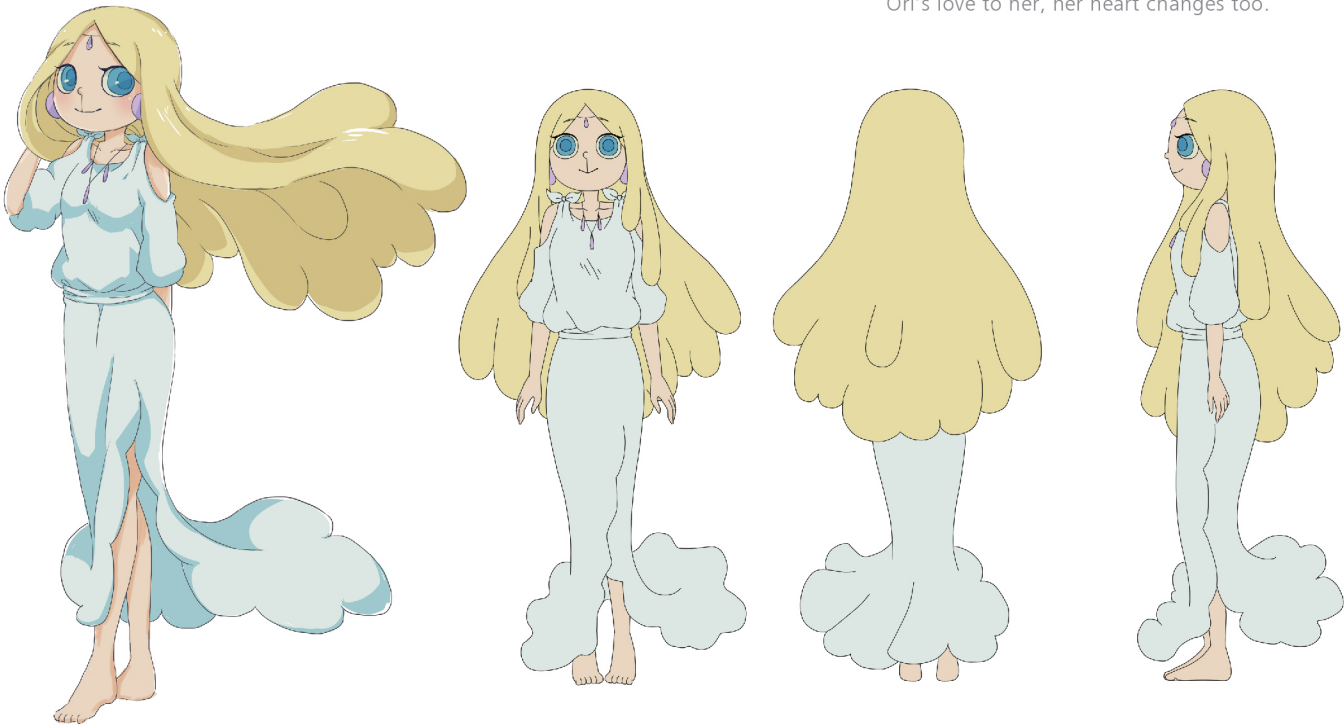
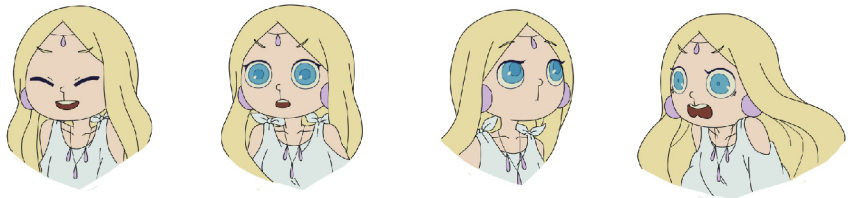
Ori lives alone in the woods and makes a living by hunting. With messy hair, he wears a loose shirt. Simple and serious, his love is real. A sudden encounter with Artemis by the lake changes his life.



阿特米絲 Artemis

月之女神阿特米絲，有著優雅的身段與迷人的笑容，每當黑夜來臨，她掌管的月亮便會自地平線出現，灑落和煦的月光。感受到歐利對她的愛後，內心起了變化。

She is the goddess of the moon, with elegant gestures and charming smiles. When night falls, the moon governed by her rises from the horizon. The moonlight shines gently over the land. Feeling Ori’s love to her, her heart changes too.



故事保留了神話中的角色，並將劇情著重於歐利及阿特米絲之間，跨越人與神的藩籬，彼此愛意的體現，以新的角度詮釋既有神話故事。使用手繪動畫的形式表現，讓觀眾能夠一同進入充滿奇幻色彩的視覺饗宴。

In the story, the roles in the myth are preserved, with highlights on the relationship between Orion and Artemis. Transgressing the boundaries of mortality and immortality, they embody true love. We try to interpret the myth using new perspectives. With hand-drawn graphics, we enthusiastically lead the audiences into a fantastic world of color and imagination.



場景設定 Setting

故事發生在一個偌大的湖邊，周圍盡是山與森林的環繞，巨大的月亮照亮整個夜空。歐利所居住的樹屋倚靠在湖邊一棵巨木之中，並有小階梯可攀爬到上方的樹枝上。

The story happens by a huge lake surrounded by mountains and woods. The gigantic moon occupies the night sky. The tree house where Ori lives is located on a huge tree by a lake. It is connected to the ground with stairs.

