

ALMOST LIFE



周 瑋婷 -
Zhou, Wei ting

平面設計 / 插畫 / 動畫製作 /
影片後製
Photoshop / Illustrator / Premiere /
After Effect

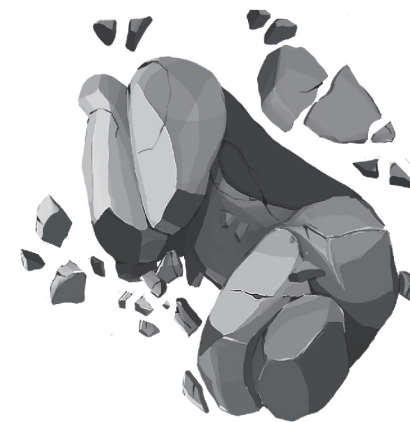
s26222455@gmail.com

「困難磨練出人的意志。」

在人生的洪流裡，每個階段面臨著不同的考驗，時間推著我們前進，環境磨練我們的思想，一次次的摩擦使我們成為「人」。

「**Difficulties make a man strong.**」

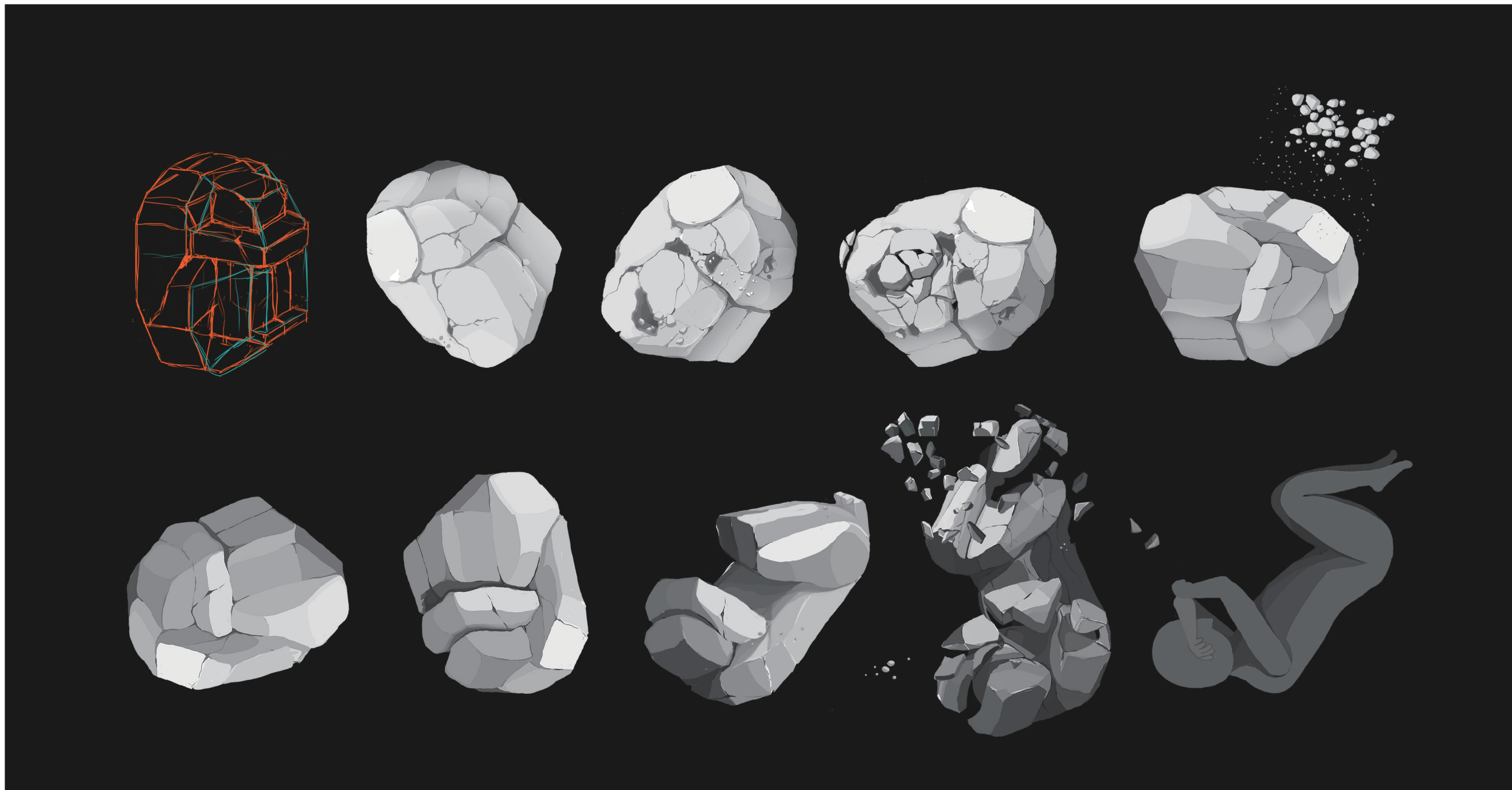
In our life, we face different difficulties. We are pressed for time and cultivate critical thinking through different environments. Every friction makes us to become a "man".



ALMOST LIFE

人生裡大部分是如此，面臨困難解決困難，也因為這樣人生不斷在學習而人們因經驗而進步成長。就如同鵝卵石原本只是山上的一顆粗曠的石頭，經歷過風、河流、其他岩石等等侵蝕碰撞，沿著河流滾動到了下游成為了一顆明亮且圓潤的鵝卵石。人生的經歷就像是鵝卵石蛻變的過程，一次次的摩擦，進而使我們琢磨成人。

Most of the time in our life, we face and solve the problems. The experiences make us learn new things and grow up. It is like an original pebble stone, rolling with the wind and the rivers, becomes a bright and round pebble stone. Our life experience is as the transformation process of a pebble stone. Every friction makes us to be a man.



創作動機

在面臨困境時，人們會找尋一段話一段文字或一首歌等等對自己產生共鳴的事物，像告訴自己一個道理讓自己有勇氣和希望去面對困難。希望藉由2D動畫手法，希望能成為人們產生勇氣的道理去面對未來困難。

Motivation of Creation

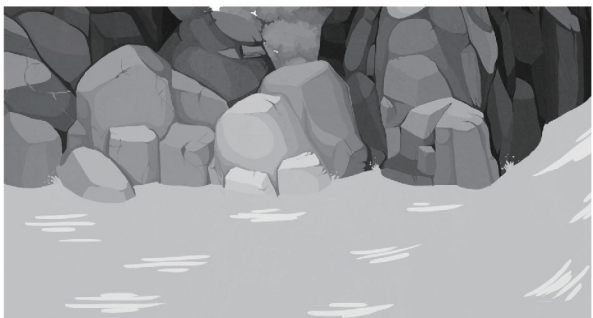
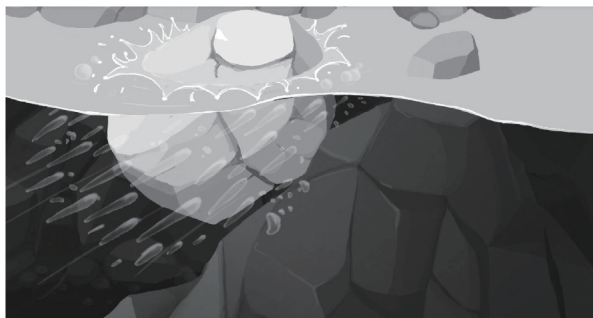
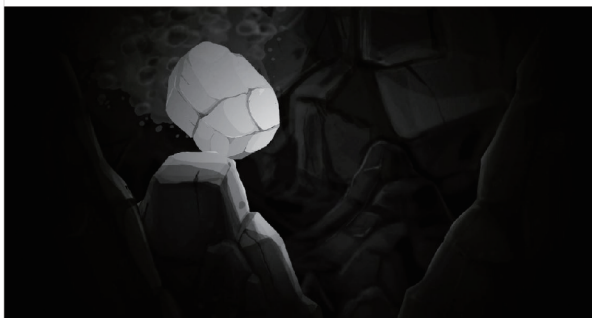
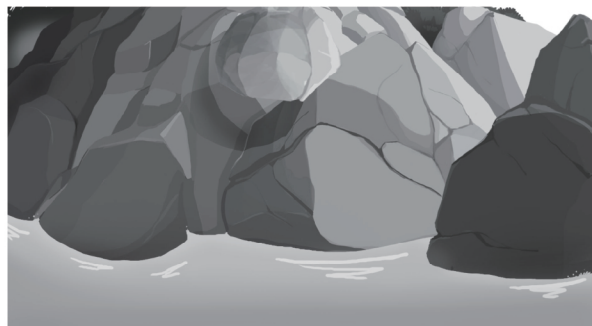
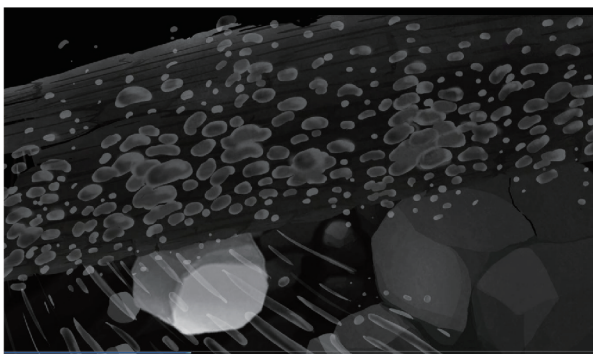
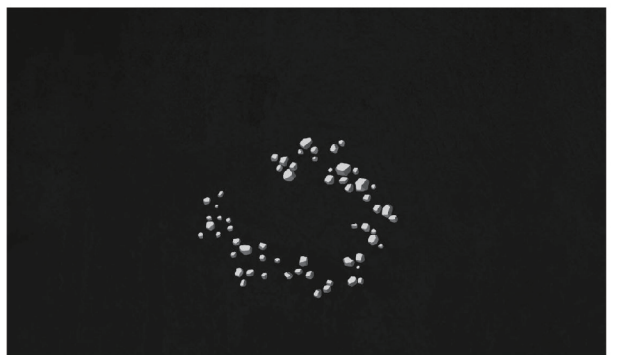
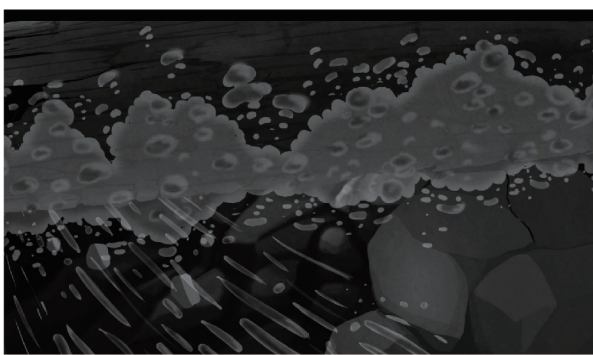
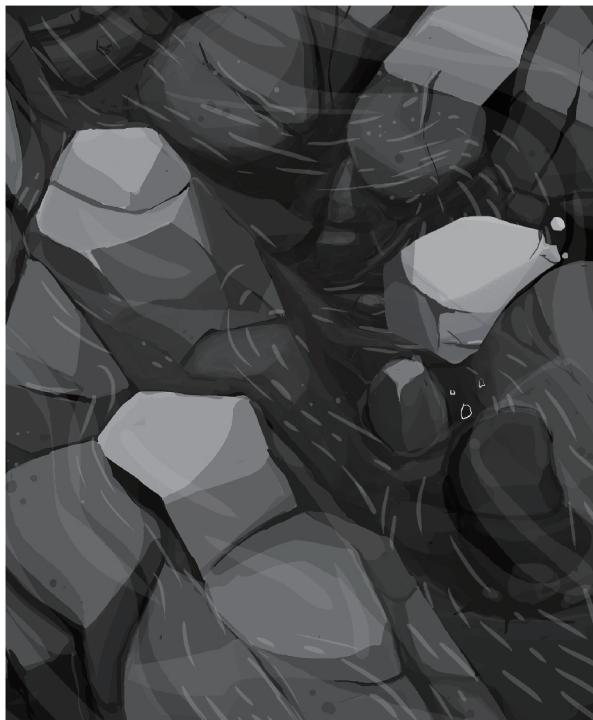
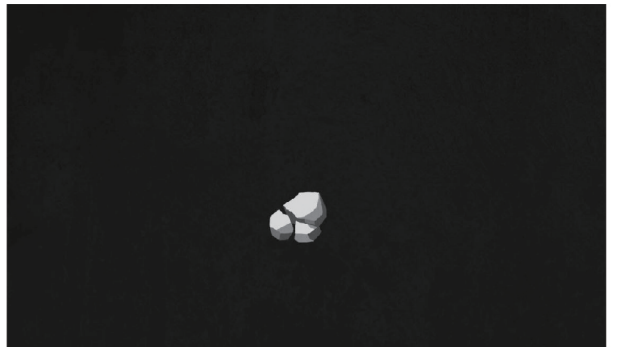
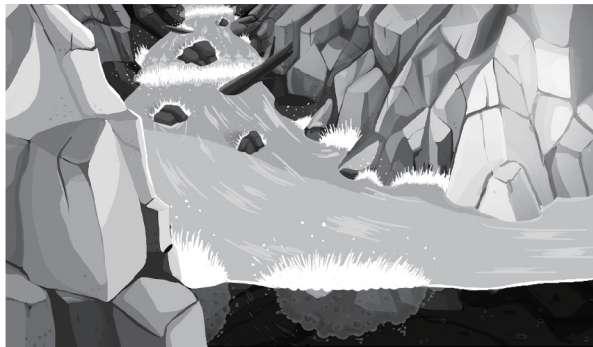
In facing difficulties, people like to look for a passage or a song, resonating with them. People regard it as a truth, bringing courage and hope. Through 2D animation, we hope this can be the truth for people to believe in being brave to face difficulties.

人物設計

一次次的撞擊，掉落身上原本的尖銳逐漸成為一個圓潤的人形。動畫人物設計以強烈的光影設計石頭外型，由立方體做發想切割出石頭的雛型，而方體慢慢切割出現越來越多稜角，逐漸的趨近於圓形。

Character Design

Constant strikes sharpen a character to be a full figure. To create characters for animation, strong shadow design is used to design stone shape. The prototype of the stone comes from the cube. After the cutting, more edges and corners are on the cube, similar to a circular shape.

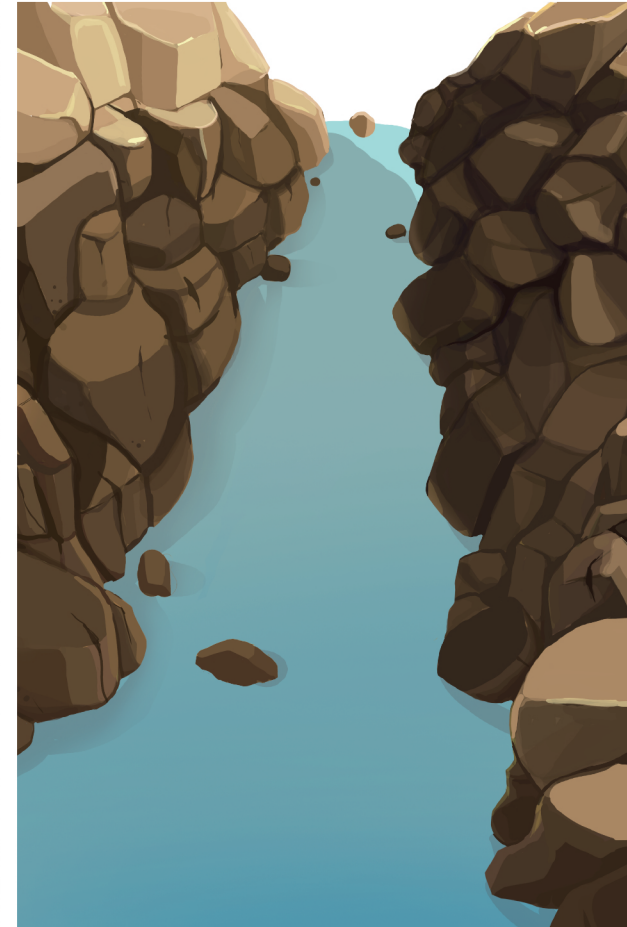




ALMOST LIFE / 短篇動畫

一顆石頭在一次大雨的沖刷從原本的山頂上慢慢滾落進湍急的河流，河流帶著他碰撞與其他石頭樹枝等等產生摩擦，這顆石頭的樣貌漸漸產生變化，漸漸的他……。

藉由將人比喻為鵝卵石，描述人與環境之間的關係變化，帶出設計理念「困難磨練出人的意志」，人生中每個階段面臨著不一樣的困難，從經歷中去學習經驗突破重重考驗，時間和環境琢磨著我們的意志，時間推著我們往前然而回過頭，才發現自己已經不是當初的自己了。



ALMOST LIFE / Animated Short Film

A stone rolled from the summit of a mountain to a rapid river in the rain. It rolled along the river, rub with other stones and branches, changed its shape, and ...

By means of likening man to a pebble stone, we convey the concept "Difficulties make a man strong" in change of relationship between man and environment. There are different difficulties that we encounter in our life. We learn through our experiences. As time passed, we finally realize that all of us have changed.