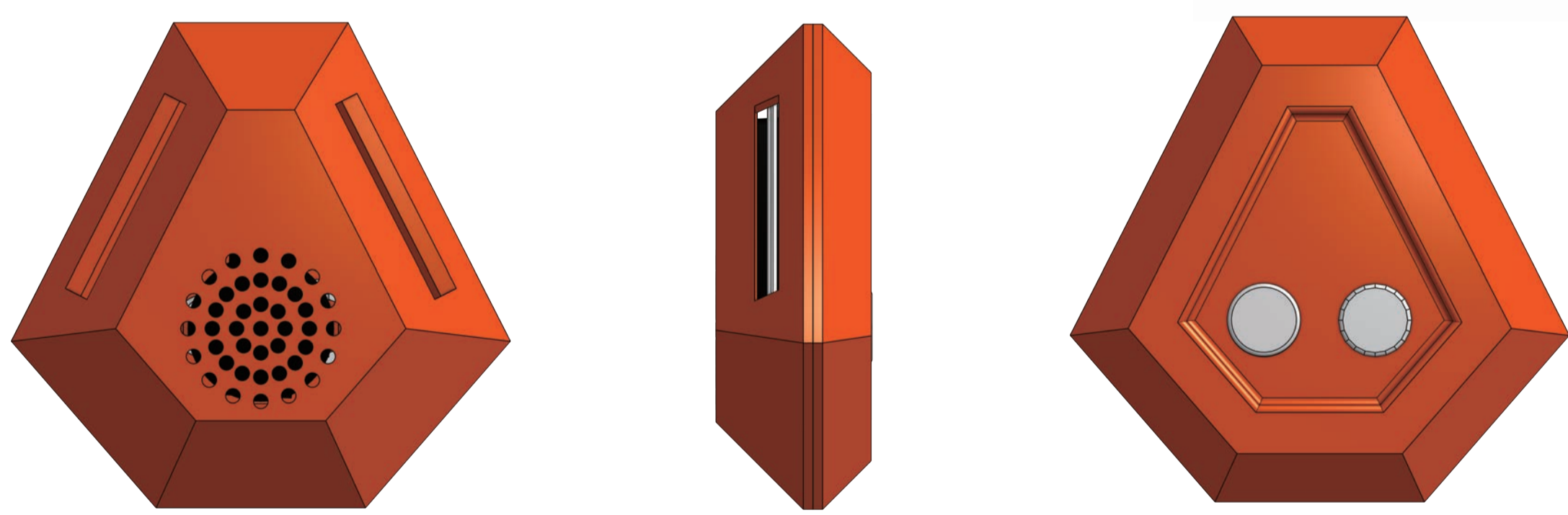
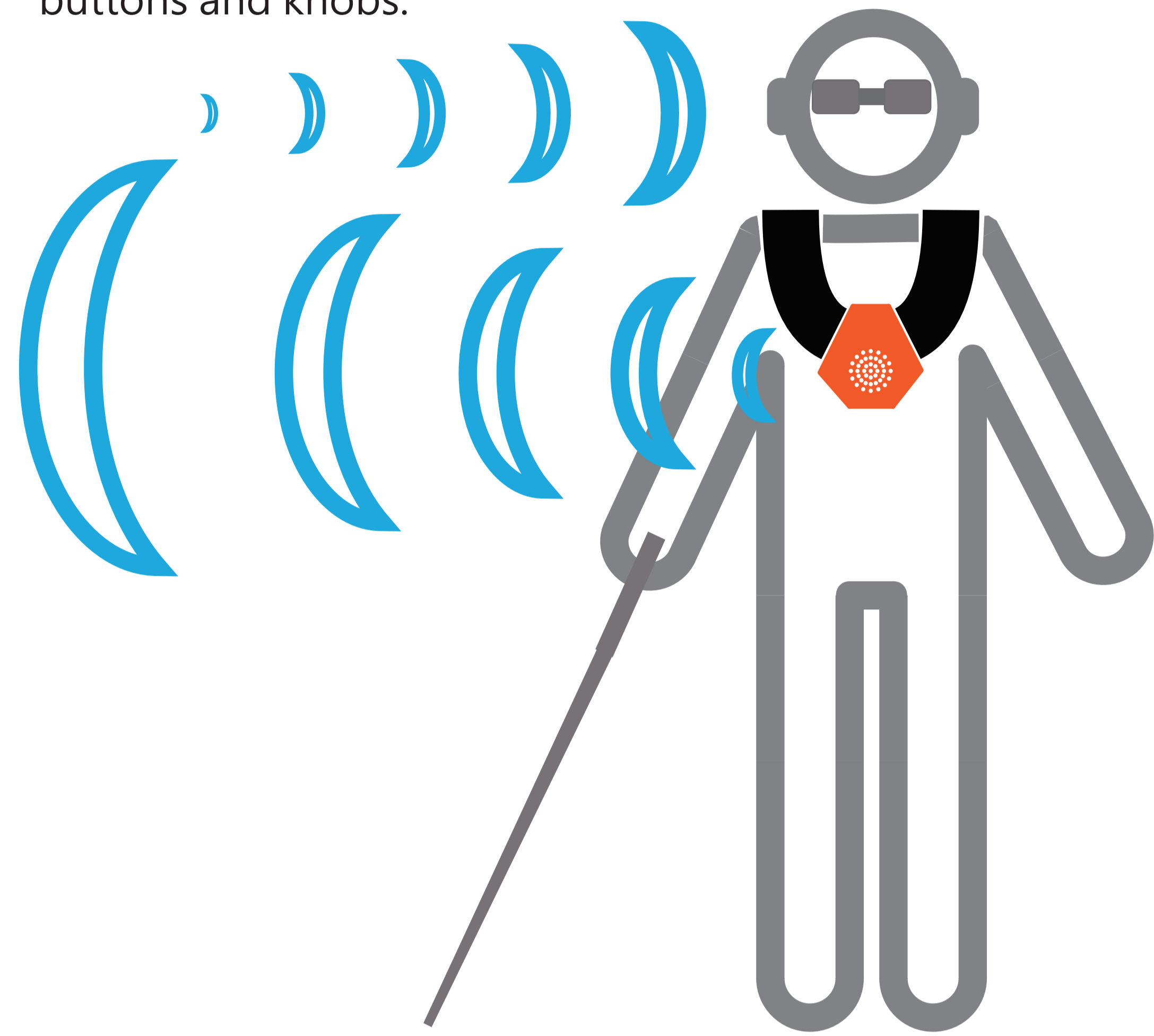
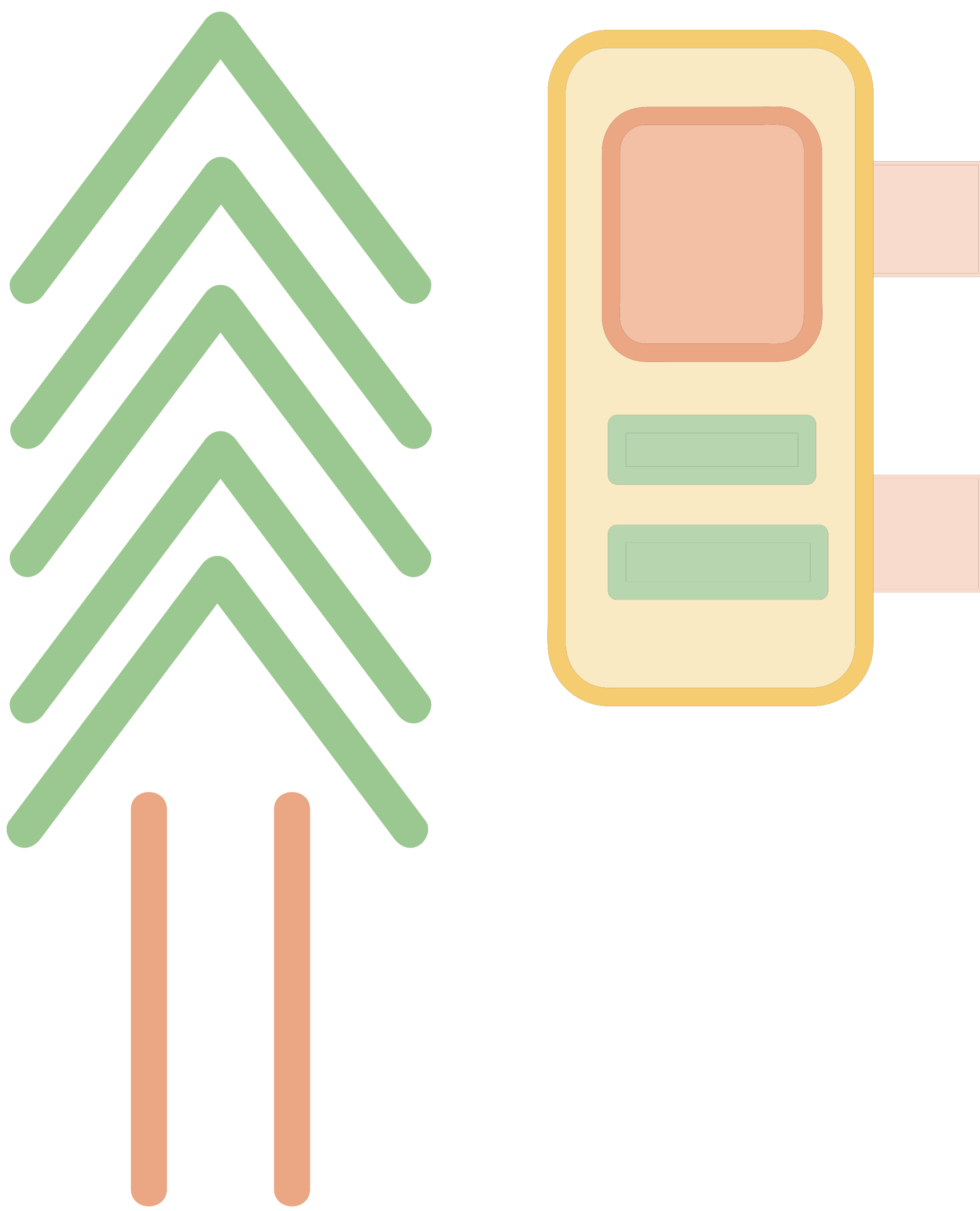


# 人類迴聲定位輔具

## Human Echolocation Aids

運用人體本身的迴聲定位能力來為盲人設計出一款簡單、方便、實用且便宜的行動輔具。藉由聆聽輔具本身不斷發出特定頻率的音波碰撞到物體反彈回來後的聲音來判斷周遭的環境，同時可透過按鈕與旋鈕來開關或改變音量。

Use the echolocation ability of the human body to design a simple, convenient, practical and cheap mobility aid for the blind. Judging the surrounding environment by listening to the sound waves of a specific frequency continuously emitted by the aid itself and bouncing back from objects. At the same time, the volume can be switched or changed through buttons and knobs.



2. 橘色的色調能讓視力正常的人能一眼看出盲人的身分，發出的聲音也能提醒旁人多多禮讓。

The orange color allows sighted people to identify blind people at a glance, and the sound of assistive devices can also remind others to be polite.

3. 將尼龍帶的出口設計在上層而非下層，讓尼龍帶不會直接磨到胸口同時防止汗水浸入。

The outlet of the nylon strap is designed on the upper layer instead of the lower layer, so that the nylon strap will not directly rub against the chest and prevent sweat from soaking in.

1. 使用具有一定寬度的尼龍帶而非繩子，同時將開口設在兩側，抑制晃動的同時也讓其幾乎不可能被翻轉過去。

Using a nylon strap with a certain width instead of a rope, and setting the opening on both sides, suppresses shaking and makes it almost impossible to turn it over.

4. 本體設計成類似西洋梨(上窄下寬)的形狀能更好的把重心壓低(抑制晃動)。

The assistive device itself is designed in a shape similar to a pear (narrow at the top and wide at the bottom), which can better lower the center of gravity (suppress shaking).

5. 在輔具背面設置凹槽防止衣物或身體不小心碰到開關或旋鈕，同時也能降低輔具本身與身體的接觸。

A groove is provided on the back of the auxiliary device to prevent clothing or the body from accidentally touching the switch or knob, and at the same time, it can also reduce the contact between the auxiliary device itself and the body.

Designed by /



黃煒庭